

A study on the transformation of rural houses on the Jeju Area through extension and renovation

* / Choi, Jae-Kweun

Abstract

The purpose of this study is to recognize the continuation and change of rural houses on the Jeju Area through extension and renovation which is expressed in the modernization course.

For this study, I choose 52 residences in 8 villages as the subjects which are changed by the spontaneous will of the inhabitants who live in Jeju area. As for the research method, after visiting the subject residence directly, and the field study such as the actual estimation research, observation research, and interview research were performed.

The conclusion of the study with these purpose are as follows. First, the continuation and change of the rural dwelling space in the traditional aspect. As for the arrangement of the house, the recognition of securing the space for the Ma-dang is continuously expressed. Second, The dwelling spatial composition after the modernization was changed into the pattern which make each space individual, however the opened structure which is focused upon the Ma-ru and An-bang is still being continued. Thirdly, The kitchen continuously shows the assistance of the standing household life according to the modernization. Additionally, with the multi-use room was arranged for the daily use as well as to cook in the space or to store the household tools.

1.

1.1.

(Amos Rapoport)

가

(institution)

가

1960

가

(integration)

(identity)

, 가

1)Amos Rapoport., , , 1995, p.72

(轉用的)

가

1.2.

2), 3) 4)

가

5)가 1985

가

6)

가 8 52

23

29

가

- 2) Spradley James P., , 1996.
- 3) Spradley James P., The Ethnographic Interview. New York: Holt, Rinehart & Winston, 1979.
- 4) Lee Hee-Bong, Space, Form and Subculture: The use of a Field Study Method, Ph. D. Dissertation in Architecture University of Pennsylvania, 1985.
- 5) , 2000, p. 19.
- 6) , 가

가
1971 1985

< >

1	G45			1945	
2	N48			1948	
3	S48			1948	
4	M49			1949	
5	G50			1950	
6	S50			1950	
7	SA51			1951	
8	U55			1955	
9	N56			1956	
10	M60			1960	
11	S60			1960	
12	O60			1960	
13	K61			1961	
14	SA62			1962	
15	O62			1962	
16	K62			1962	
17	SA64			1964	
18	G65			1965	
19	K65			1965	
20	M67			1967	
21	O67			1967	
22	O68			1968	
23	K70			1970	
24	O71			1971	
25	S71			1971	
26	G73			1973	
27	M73			1973	
28	O74			1974	
29	G75			1975	
30	SA77			1977	
31	O77			1977	
32	N78			1978	
33	M78			1978	
34	G78			1978	
35	M78-1			1978	
36	O80			1980	
37	U81			1981	
38	O81			1981	
39	G82			1982	
40	M83			1983	
41	M83-1			1983	
42	M83-2			1983	
43	U83			1983	
44	M83-3			1983	H
45	O83			1980	
46	S83			1983	
47	M84			1984	
48	N84			1984	
49	N84-1			1984	
50	G85			1985	
51	N85			1985	
52	M85			1985	

2.

7) 8)

9) 가

가

2.1.

가

1 가

()
()

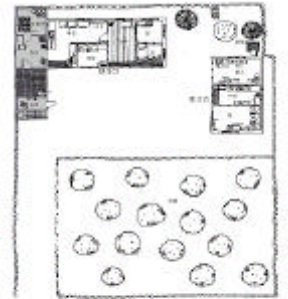
가

< 2>

			22 (95.7%)	26 (89.7%)
			8 (34.8%)	12 (41.4%)
		가	11 (47.8%)	9 (31%)



(: K70)



(: SA77)

(2)

41.4%(12/29)

34.8%(8/23),

가

가

< > : □

(1)

95.7%(22/23),
89.7%(26/29)

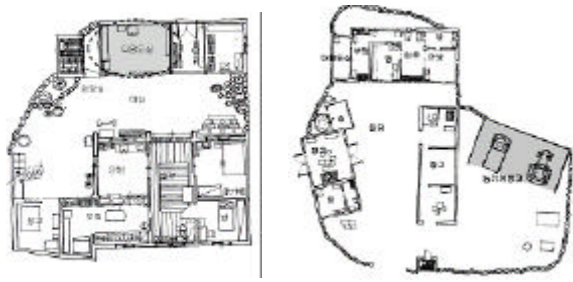
가

가

가

7)
8)

9) 가
, 1998, pp. 34 35.



< 3>
(: G82)

< 4>
(: K65)

31%(9/29)

가

가

가

가

(3)

가

47.8%(11/23),



< 5>
(: N48)

< 6>
(: M85)

< 3>

< > : ■ : ■ : ■ : ■ :

2.2.

48%(14/29)

2

26.1%(6/23), 65.2%(15/23), 34.8%(8/23)
 24.1%(7/29), 44.8%(13/29),
 69%(20/29)

가

가 가

가

< 5>

				가	
	15(65%)	15(65%)	5(21.7%)		3(13%)
	4(13.8%)	3(10.3%)	14(48%)		29
	19(36.5%)	18(34.6%)	19(36.5%)		3(5.8%)
					52

10), 11)

3.2. ()¹²⁾

65%(15/23), 73.9

< 4>

	6(26.1%)	15(65.2%)	8(34.8%)	23
	7(24.1%)	13(44.8%)	20(69%)	29
	13(25%)	28(53.9%)	28(53.9%)	52

(17/23)%

가

< 6>

				가	
	15(65%)	17(73.9%)	3(13%)		2(8.7%)
	4(13.8%)	3(10.3%)	2(6.9%)		1(3.5%)
	19(36.5%)	20(38.5%)	5(9.6%)		3(5.8%)
					52

3.

2 73.8%(17/23), 21.7%
 (5/23)

13)

, 1)

, 2) 가

가 , 3)

가

가 가

2

, 4)

가, 5)

3.1. ()

65%(15/23), 65%(15/23)

10)

11)

12)

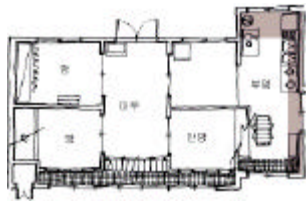
13) (, ,)

1

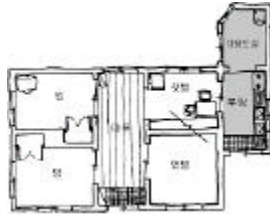
2

< 10>

				가		
	2(8.7%)	12(52.2%)	8(34.8%)	4(17.4%)	18(78.3%)	23
		3(10.4%)	6(20.7%)	10(34.5%)	27(93.1%)	29
	2(3.9%)	15(28.9%)	14(26.9%)	14(26.9%)	45(86.5%)	52



< 11> 가
(: SA64)



< 12> 가
(: O83)

3.6. ()

15)

가 52.2%(12/23),

가 69%(20/29)

가

가

가

가

가

가

가

가

가

가

가

가

가

가

가

가

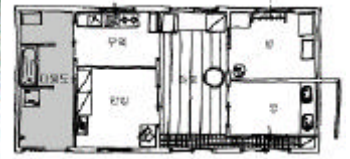
< 11>

				가		
				12(52.2%)		23
				20(69%)		29
				32(61.5%)		52

15)



< 13>
(: N48)



< 14> 가
(: G45)

3.7. ()

100%(23/23)

< 12>

				가		
				23(100%)		23
				2(6.9%)		29
				25(40.1%)		52

4.

